

SOLUTIONS FOR TOMORROW'S SAFETY CHALLENGES

2014 INDIANA SAFETY AND
HEALTH CONFERENCE & EXPO

February 18-20, 2014

Indiana Convention Center, Indianapolis

**Conference
Sponsor**



Showcasing over 100 exhibitors | Over 60 educational sessions



#INSafety14

Governor's Workplace Safety Awards Luncheon: February 20, 2014

Presented by:



In Partnership With





2014 GOVERNOR'S WORKPLACE SAFETY AWARDS

Recognizing occupational safety and health excellence



Accepting Applications Now!

Applications must be received by January 10, 2014
and are available online at www.INSafetyconf.com

To learn more about the Governor's Workplace Safety Awards or
to read about past recipients, visit www.in.gov/dol/2381.htm.

Conference at a Glance

Tuesday February 18

7:00 a.m.	Attendee registration
9:00 a.m.	Pre-conference workshops
12:00 a.m.	Lunch (<i>on your own</i>)
1:30 p.m.	Pre-conference workshops
4:30 p.m.	Expo opens
4:30 p.m.	Welcome reception in Expo Hall
6:00 p.m.	2014 Indiana Safety and Health Conference day one adjourns

Wednesday, February 19

6:00 a.m.	Exhibitor registration and setup
7:00 a.m.	Attendee registration
7:30 a.m.	Continental breakfast in expo hall
8:15 a.m.	Opening general session
9:30 a.m.	Mid-morning break in expo hall
10:15/10:30 a.m.	Concurrent workshops
11:15 a.m.	Lunch in expo hall
12:30/12:45 p.m.	Concurrent workshops
1:45 p.m.	Afternoon break in expo hall
2:15 p.m.	Concurrent workshops
3:30 p.m.	Afternoon break in expo hall
3:45 p.m.	Concurrent workshops
4:00 p.m.	Expo hall closes
5:00 p.m.	Gala Reception
	Grand prize giveaway
6:00 p.m.	2014 Indiana Safety and Health Conference day two adjourns

Thursday, February 20

7:00 a.m.	Continental Breakfast
8:00 a.m.	General Session
9:00 a.m.	Morning Break
9:15 a.m.	Concurrent Workshops
10:30 a.m.	Morning Break
10:45 a.m.	Concurrent Workshops
12:00 p.m.	Governor's Workplace Safety Awards
1:45 p.m.	Concurrent Workshops
2:45 p.m.	Refreshment Break
3:00 p.m.	Concurrent Workshops
4:00 p.m.	2014 Indiana Safety and Health Conference Adjourns

Schedule/Speakers Subject to Change

Opening General Session

Sponsored by 

Wednesday, February 19, 2014

Garrison Wynn, Wynn Solutions

Garrison has presented to some of the world's most effective leaders and business developers, from multibillion-dollar manufacturers and national associations to top New York Stock Exchange wire houses. He has a background in manufacturing, telecomm, and financial services and toured as a professional stand-up comedian. In his teens, Garrison worked with Magnavox and baseball legend Hank Aaron to promote the world's first video gaming system, and by age 27 he became the youngest department head in a Fortune 500 company's history. He researched and designed processes for 38 locations nationwide and developed and marketed products still being sold in 30 countries. He is the author of the Amazon.com bestseller *The REAL Truth About Success*, has contributed weekly to *The Washington Post*, and has coauthored with Stephen Covey. His award-winning success tools receive high praise, but his greatest strength is a magnetic live performance that keeps him in high demand, with more than 600 inquiries and 100 speaking dates per year.

Morning General Session

Thursday, February 20, 2014

Effectively Handling An Enforcement-Driven OSHA While Achieving Operational Excellence and Profitability Through Safety

Edwin G. Foulke, Fisher & Phillips LLP

Nominated by President George W. Bush, Foulke served as Assistant Secretary of Labor and head of the Occupational Safety and Health Administration (OSHA) from April 2006 to November 2008. Prior to his nomination, Foulke chaired, co-chaired and sat on various practice groups, committees and commissions related to OSHA and occupational safety and health issues. Foulke attended undergrad at North Carolina State University and received his law degree from Loyola University School of Law in 1978. In addition, he earned a Master of Laws in Labor Law from Georgetown University Law Center. Foulke is currently a partner at Fisher & Phillips LLP in Atlanta.

Send Your Entire Safety Committee!

- Safety Managers/Directors
- Industrial Hygienists
- Occupational Health Nurses or Practitioners
- Contractors
- Construction Managers
- Safety Committee Members
- Safety Consultants
- Plant Managers
- Loss Control/Risk Managers
- Facility/Building Managers
- Safety Engineers
- Maintenance Supervisors
- Personnel and HR Managers

Title Sponsor



Gibson
www.gibsonins.com

Platinum Sponsor



Nucor Steel - Indiana
Opening General Session Sponsor
www.nucor-sheetmills.com

For sponsorship opportunities, please call Jim Wagner at (317) 264-6876.

Silver Sponsors



Ivy Tech Corporate College
Refreshment Break Sponsor
www.ivytech.edu/corporatecollege



Examinetics
Refreshment Break Sponsor
www.examinetics.com



National Workwear
Continental Breakfast Sponsor
www.nationalworkwear.com

Gold Sponsors



3M
Welcome Reception Sponsor
www.3m.com/ppesafety



Community Employer Health
Name Badge Sponsor
www.eCommunity.com/employerhealth



RMS-Safety
Registration Bag Sponsor
www.rms-safety.com



Safety Partners, Ltd
Water Bottle Sponsor
www.safetypartnersltd.com

Conference Hosts



American Society of Safety Engineers
Central Indiana Chapter
<http://centralindiana.asse.org>



Indiana Chamber of Commerce
www.indianachamber.com



INSafe/Indiana Department of Labor
www.in.gov/dol



Vigil Antislip USA
Refreshment Break Sponsor
www.vigilantislip.com



KHA Online-SDS
Refreshment Break Sponsor
www.online-msds.com



Indiana School of Public Health Bloomington
Refreshment Break Sponsor
www.iub.edu/~aphealth



Safety Management Group, Inc.
Continental Breakfast Sponsor
www.safetymanagementgroup.com

SAFETY EXPO – FEBRUARY 18-19

Visit these booths and be eligible for several prizes.

EXHIBITORS *List of exhibitors as of October 31, 2013*

3E Company

3M

Acoustical Systems, Inc.

Aim Right Inc.

Airfeet Insoles

ALERT Safety Products

All Safe Industries, Inc.

American Society of Safety Engineers - Central Indiana Chapter
ATI

Bradley Consulting & Management, Inc.

CLMI Safety Training, Inc.

Community Employer Health

Conney Safety Products

Dival Safety Equipment, Inc.

Draeger Safety Inc.

Dustcontrol, Inc.

EMSL Analytical, Inc.

Environmental Management Institute

Ergo Advantage

ErgoGenesis

examinetics

Fastenal

Forklift Training Systems

Galson Laboratories

Gateway Safety, Inc.

Gibson

Hastings Air Energy Control, Inc.

Honeywell Safety Products

Hughes Environmental

HyTest/Wolverine-Footworks

IDEM Compliance and Technical Assistance Program (CTAP)

IE Monitoring Instruments, Inc.

Indiana Chamber Business Resources

Indiana Chamber Membership

Indiana Department of Labor

Indiana Safety & Supply Company

Indiana School of Public Health Bloomington

Institute for Ergonomics, The Ohio State University

ISTS-Industrial Safety & Training Services

Ivy Tech Corporate College

Jendco Safety Supply

KERAMIDA Inc.

KHA Online-SDS

Language Training Center

Lewellyn Technology

M3V Data Management

Magid Glove and Safety

Market Force, Inc.

MICCS

Midwest Toxicology Services, LLC

MSA The Safety Company

National Workwear

Nucor Steel – Indiana

ProtectEar USA

Quality Mill Supply Company, Inc.

RCI Safety

Ritz Safety

RMS-Safety

Rupp Safety Associates, Inc

SafeStart

Safety Management Group, Inc.

Safety Partners, Ltd

Safety Solutions, Inc.

Safety Resources, Inc.

SafetyWear

Scantron

Select Physical Therapy

Showa Best Glove

SiteHawk

State Safety & Compliance

Stauffer Glove and Safety

Targeting Customer Safety, Inc.

The HearSafe Group

Tingley Protective Clothing and Footwear

Trinity Safety Group

United Sales Associates

US Healthworks of Indiana, Inc.

Valicor Environmental Services

Vestil Manufacturing Company

Vigil Antislip USA

Visual Workplace LLC

Westex

Wilcox Environmental Engineering, Inc.

Working Well, St. Francis

Workplace Safety & Health Co., Inc.

Worldwide Protective Products

WHAT'S GOING ON

Welcome Reception

Tuesday, February 18 | 4:30 p.m. - 6:00 p.m.

Sponsored by: 

Join us as we kick off the 2014 Indiana Safety and Health Conference & Expo with hors d'oeuvres and host bar. This intimate event is the perfect opportunity to meet new colleagues and catch up with old friends.

Gala Reception

Wednesday, February 19 | 5:00 p.m. - 6:00 p.m.

Following the day's activities, we invite you to join us for hors d'oeuvres and host bar as you mingle with sponsors, exhibitors, speakers and other attendees. Make sure you register for prizes at many of the booths. The grand prize will be presented at the reception, so don't miss it!

2014 Governor's Workplace Safety Awards Luncheon

Thursday, February 20 | 12:00 p.m. - 1:45 p.m.

The Central Indiana Chapter of ASSE and the Indiana Chamber of Commerce, in partnership with the Indiana Department of Labor, are pleased to present the 2014 Governor's Workplace Safety Awards. The Governor's Workplace Safety Awards recognize the most innovative safety and health initiatives among Indiana's workplaces.

Applications must be received by January 10, 2014 and are available at www.INSafetyConf.com.



Follow the Conversation

On Twitter, we will use the hashtag #INSafety14 throughout the conference.



Professionally Connect

Connect to speakers, exhibitors, partners and sponsors by joining the Indiana Safety and Health Conference & Expo group on LinkedIn. Search under groups: "Indiana Safety and Health Conference & Expo."

2014 Conference Organizing Committee

- Christina Merriott, 2014 Conference Chair for Central Indiana Chapter of ASSE (Milestone Contractors, LP)
- Kerri Begley, CMP, Conference Administrative Chair, Indiana Chamber of Commerce
- Jesse Brothers, CMP, Sponsor/Exhibitor Coordinator, Indiana Chamber of Commerce
- Michelle Ellison, Director, INSafe, Indiana Department of Labor/INSafe
- Jennifer George, Speaker/Concurrent Session Coordinator, Indiana Chamber of Commerce
- Bruce Guiliani, CSP, CET, Heritage Group Safety
- Claudia Niehaus, Immediate Past-president of Central Indiana Chapter of ASSE (IBC Advanced Alloys, Inc.)
- Vince Plank, CSP, President, Central Indiana Chapter of ASSE (Safety Management Group)

Conference Location

Indiana Convention Center

100 S. Capitol Ave., Indianapolis, IN 46225

This year's conference and expo will be held at the Indiana Convention Center, conveniently located in downtown Indianapolis and connected to the headquarters hotel via a skywalk. Parking information is available at www.INSafetyConf.com.

Conference Headquarters Hotel

Hyatt Regency Indianapolis

One South Capitol Ave., Indianapolis, IN 46204

To book your conference hotel room, call the Hyatt Regency Indianapolis at (888) 421-1442 or visit www.hyatt.com. Please state that you are attending the "2014 Indiana Safety & Health Conference" or provide group code SAFE to receive the conference rate (subject to availability).

We encourage you to stay at the conference hotel, the Hyatt Regency Indianapolis. Those who stay at the Hyatt Regency will be entered into a drawing for a \$100 gift certificate to Ruth's Chris Steak House. We will draw the name on Wednesday morning, February 19, 2014.

Conference Materials

All speaker materials will be available in advance of the conference at www.INSafetyConf.com.

Continuing Education

- Credit pending for: CSP, CIH/CAIH, CHMM, CNE, Wastewater Operator Certification
- Safety Specialist Compliance Certificate – up to three credits
- CEUs hours and CM Points are dependent on certification boards.

Promotional Materials Policy

By enrolling in the conference, participants grant the Indiana Chamber of Commerce and ASSE Central Indiana Chapter the right to use, in promotional materials, your likeness or voice as recorded on or transferred to video, print or other media.

Prescription Safety Glasses

Please drop off your old prescription safety glasses at the ASSE booth. These glasses will be donated to the Lions Club.

Workshop Skill Level

- Novice: Defined as ideal for someone new to the safety industry
- Intermediate: Defined as ideal for someone not new to the industry but not yet an expert
- Advanced: Defined as ideal for someone who is an expert in the safety industry

Proudly brought to you by:

- Central Indiana Chapter of American Society of Safety Engineers
- Indiana Chamber of Commerce
- INSafe and the Indiana Department of Labor

Register: Phone: (800) 824-6885 • Online: www.INSafetyConf.com

PRE-CONFERENCE WORKSHOPS

***Note: After each session title (when data available), in parentheses, are the session skill level and appropriate company/employee size. Skill levels are Novice (N), Intermediate (I), Advanced (A) or All. Company size ranges from zero to 500+ employees.**

TUESDAY, FEBRUARY 18, 2014

7:00 a.m. – 5:00 p.m. – Registration Desk Hours

Sponsored by



7:00 a.m. – Continental Breakfast

Sponsored by



Pre-conference Workshops

Morning Break

Sponsored by



9:00 a.m. – 12:00 p.m. – Morning Workshops

Workshop 1

Understanding, Assessing and Mitigating Combustible Dust Hazards (All; All)

The dangers presented by combustible dusts have drawn national attention in recent years, due to a number of high-profile explosions resulting in numerous deaths. Seemingly benign materials can become deadly when ignited as a dust cloud. These ordinary materials, such as food, sawdust or plastic can fuel violent explosions that hurt or kill workers and destroy buildings and other structures. This session will discuss what defines combustible dusts, examine the five conditions that can cause a dust explosion to occur and review important tactics for assessing, controlling and mitigating combustible dust exposures. The session will also include discussion on consensus standards that are in place, as well as current movements to enact regulations governing combustible dust exposures.

Ben Peetz, ASP, CFPS, Senior Loss Prevention Specialist, Lumbermen's Underwriting Alliance

Workshop 2

Safety Goes Digital (All; All)

The number of safety-related smartphone apps grows nearly every day; 66% of all adults use one or more social media platforms to communicate, and m-Learning technologies have improved substantially in the past five years. It is no longer a matter of whether an organization should utilize digital technology, but how to filter out what works best for their strategic objectives and audiences. This session will review the current uses of digital technology for SH&E professionals.

Pam Walaski, CSP, CHMM, Regional Manager, Health, Safety and Environmental Services, Compliance Management International

Workshop 3

Environmental Permitting for the Safety Professional

Greg Hemker, President, EHS Technology Group LLC and Stacey Pfeffer, Director, Office of Compliance Support/OPPTA, Indiana Dept. of Environmental Management

12:00 p.m. – 1:30 p.m. – Lunch Break (on your own)

Afternoon Break

Sponsored by



1:30 p.m. – 4:30 p.m. – Afternoon Workshops

Workshop 4

Arcs, Sparks, Fire and Explosions - Taking Training to the Next Level!

Learn some effective techniques for developing and delivering high-impact presentations using PowerPoint and demonstrations. This session will cover some of the "how to" techniques in order punch up your training delivery, enhance your PowerPoint and incorporate demos to create dynamic presentations. You will see the masters perform their training "magic" with electric arcs and sparks, fire and explosions, as well as some unique "envelope pushing" items never before seen at a safety and health conference.

John Gryzwacz, Professor Emeritus, and Frank Perrino, Professor Emeritus, OSHA National Training Institute

Workshop 5

PC5: Are You Promotable? Building Your Interpersonal Skills Toolkit

In today's business environment, extra attention should be given to mastering your specific skill set and growing your knowledge base in your given field. This mastery provides the best opportunity for upward mobility in your present company or will give you security in switching companies as you take with you transferrable skills that can be easily applied. This session will examine the essential interpersonal traits that are needed, when combined with your technical expertise, in order to be viewed favorably when personal promotional opportunities are available.

Julius Rhodes, SPHR, Founder and Principal, mpr group

Workshop 6

PC6: Qualifying Contractors (Intermediate; All)

It is vital that facilities, owners and general contractors qualify contractors in regard to safety prior to awarding projects to the contractors in the construction industry, maritime industry, general industry and service industries. This presentation will discuss the reasons for and benefits of qualifying contractors. It will examine methods of using "lagging indicators" such as OSHA logs, TRIR rates, EMR rates and DART rates in order to compare the past safety performance of different contractors. We will also focus on using "leading indicators" such as safety programs, safety training, safety inspections, safety personnel and safety improvements in order to compare the potential safety performance of different contractors. I

Jeffery Dennis, MS, CSP, CHMM, CET, CSSM, WSO-CSE, President, Industrial Safety Solutions, Inc. and Bruce Guiliani, CSP, CET, CIT, Corporate Safety and Loss Control Director, Heritage Group Safety

4:30 p.m. – 6:00 p.m. – Safety Expo Hours

4:30 p.m. – 6:00 p.m. – Welcome Reception in Safety Expo

Sponsored by



CONCURRENT WORKSHOPS

***Note: After each session title (when data available), in parentheses, are the session skill level and appropriate company/employee size. Skill levels are Novice (N), Intermediate (I), Advanced (A) or All. Company size ranges from zero to 500+ employees.**

WEDNESDAY, FEBRUARY 19, 2014

7:00 a.m. – 5:00 p.m. – Registration Desk Hours

Sponsored by



7:30 a.m. – 4:00 p.m. – Safety Expo Hours

7:30 a.m. – Continental Breakfast in Expo Hall

8:15 a.m. – Conference Welcome/Opening General Session

Sponsored by



Welcoming and Opening Remarks: Vince Plank, President, Central Indiana Chapter of the American Society of Safety Engineers
Keynote Presentation: Garrison Wynn, Wynn Solutions

9:30 a.m. – Safety Expo Refreshment Break in Expo Hall

Sponsored by



Concurrent Session One

Four sessions take place from 10:15 a.m. to 11:15 a.m.; three sessions take place from 10:30 a.m. to 11:45 a.m. Please choose only one of the seven.

10:15 a.m. – 11:15 a.m.

Effective Safety Management

SM1: Governor's Workplace Safety Awards – Best Practices Panel

The Governor's Workplace Safety Awards provide recognition for companies based on best practices for eliminating workplace injuries and illnesses. Hear from representatives of companies that have previously won this prestigious award. Ask questions about their journey, their successes and bumps in the road. Understand how these organizations measure outcomes. Find out how limited budgets and environments impact their bottom line. Hear about these companies' ever-evolving safety initiatives.

Don Billheimer, Production Manager and FESHO, LORD Corporation;
Bill Mott, Vice President, Corporate Labor Relations, Hunt Construction Group. Moderator: Michelle Ellison, Assistant Commissioner, Indiana Dept. of Labor

Updates in Education and Consulting Skills

EC1: Improving Training by Incorporating Adult Learning Principles (Intermediate; All)

This session will focus on the discipline of adult learning; in particular, the current state of EHS training will be discussed. We will also outline some of the current practices in adult learning and how to incorporate these principles into your current training practice.

William R. Coffey, CSP, CPEA, Owner, WRC Safety and Risk Consultants

Management Safety Principles and Solutions

MS1: Developing a Safety Culture Within Your Organization Panel (All; All)

This presentation will address how to implement a culture of safety within your organization and the steps necessary to achieve this goal.

The panelists will draw from personal experience working in the field and will touch on both general industry and construction.

Gary Clark, RSP, Dean Hiles, Andy Metsker and Mark Styers, all loss prevention consultants with Gibson

Worker's Comp: Injuries, Analysis and Prevention

WC1: Workers Compensation and the Safety Professional (N/I; 0-249)

Worker's compensation is a significant cost for an employer's insurance program. This session will address what a safety professional can do to help reduce that cost.

Kurt Klumpers, CPCU, VP - Work Comp, Arlington/Roe

10:30 a.m. - 11:45 a.m.

Occupational Health and Wellness

OH1: Pre-Employment Physical vs. Post-Offer Employment Testing: Can You Afford to Not Know the Difference? (All; All)

This session will address the important differences between a pre-employment physical and a post-offer employment test that can save you substantial money on claims and help you better hire physically qualified individuals. These tests can also screen out unstable medical conditions or pre-existing musculoskeletal conditions. In this session we will review the basic components of a comprehensive post-offer employment test. We will then discuss how to legally implement this type of testing into your hiring process. Finally, we will review several real-life cases of employers that use these tests in their hiring process and the potential return on investment they experienced.

Katie McBee, PT, DPT, OCS, MS, CEAS, Regional Director of WorkStrategies, Select Medical

INSAFE/Safety Fundamentals

SF1: Effective Training for Maximum Safety Performance

A lot of time and money are expended for safety training, but how often is training ineffective? Attendees will learn proven methods of preparing, delivering and following up that make training effective. Short case studies and practical examples will illustrate how to successfully make the training transfer to the workplace and impact safety performance.

Dr. Earl Blair, Associate Professor & Graduate Program Director/Safety Management, Indiana University, and Bradley Freeman, CIH, CSP, INSafe Health Consultant, Indiana Dept. of Labor



Construction Safety

CS1: Incident and Injury Free – it's not ZERO

IIF, the acronym for Incident and Injury Free, is a phrase used to describe a philosophy of safety management. The premise is that a set of policies, procedures and manner of thinking is instituted within a company in such a way that these actions create a condition where accidents, injuries and damage incidents simply do not occur. This session examines the issues associated with this approach and offers participants the opportunity to examine the possibility of implementing this approach within their own company.

Sheryl Wisner, Safety Director, Fox Contractors

11:15 a.m. – 12:30 p.m. – Lunch in Expo Hall

Concurrent Session Two

Four sessions take place from 12:30 p.m. to 1:45 p.m.; three sessions take place from 12:45 p.m. to 1:45 p.m. Please choose only one of the seven.

12:30 p.m. - 1:45 p.m.

Effective Safety Management

SM2: Initiating On-site Medical Facilities

John Bawcum, CSP, Human Resource Manager, BraunAbility | The Braun Corporation and Becky Kroft, BraunAbility | The Braun Corporation

Updates in Education and Consulting Skills

EC2: Humor in Safety (All; All)

Have your safety and health presentations become drab and dreary? This session will address how to engage your employees through the use of personal anecdotes, humorous video clips, storytelling and more. We all know that safety is a serious topic, but we can learn how to make safety training interesting and even fun! You just may find that by adding a bit of humor to your sessions, you will enjoy teaching the classes more than ever before and your students will remember the teaching points.

Tim Page-Bottorff CSP, Senior Safety Consultant, SafeStart(TM)

Management Safety Principles and Solutions

MS2: Promoting Human Error Reduction and Human Performance Enhancement: Leader's Role! (All; 500+ employees)

When human error occurs in any industry, the results can be catastrophic. As investigations tend to indicate, whenever an event does occur, there is almost always a series of broken barriers, any one of which could have prevented the event. There are two predominant schools of thought regarding how to implement the type of organizational change that is required to generate substantial performance improvement. One school is "top-down." This requires consistent regimented management and/or charismatic leadership (generally along with structured policies, procedures, checklists, etc.) in order to drive desired behaviors. The other is "bottom-up," which seeks to grow participation and collective behavior change at the frontline, ultimately to have it proliferate in all directions throughout the organization. The truth is, in order to achieve substantial and sustainable improvements in human performance ... you need both.

Tim Autrey, CEO/FOUNDER, Practicing Perfection Institute, Inc.

Worker's Comp: Injuries, Analysis and Prevention

WC2: Effectively Managing an Ergonomic Process (Novice; All)

During this session, participants will be introduced to a process for managing ergonomics, as well as led through a planning worksheet to establish an effective and sustainable process. Participants will learn how to define the scope of the process; establish long-term goals and plans; establish key performance indicators; identify site resources; determine training needs; and develop a plan for implementation.

Examples from successful organizations will be shared. Participants will be encouraged to share their current process, and discuss strengths and weaknesses. At the end of the session, participants will have a draft framework of an ergonomic process to share within their organization.

Blake McGowan, CPE, Managing Consultant, Ergonomic Engineer, Humantech, Inc.

12:45 p.m. - 1:45 p.m.

Occupational Health and Wellness

OH2: Effectively Combining Safety and Health Strategies To Make Wellness Work

For years, employers have implemented wellness programs in an attempt to control health care costs. High performing companies have found that workplace wellness, when done right, yields significant benefits. Now more than ever, employers are looking for ways to remain competitive and have healthier, higher performing employees. Healthier employees are more productive, have fewer absences due to health issues, and have fewer and less severe workers' compensation claims. With an aging and generally unhealthy population of Americans, now is the time to develop and implement a strategy to combine safety and wellness initiatives to support the health of each individual employee. This session will address how the evolving landscape of the workplace, health care, wellness and safety require employers to focus on evidence-based preventative strategies, innovative solutions and policies that support healthy goals.

Nicole Fallowfield, CWP, Director of Health Risk Management, Gibson

INSAFE/Safety Fundamentals

SF2: The "Carrot" or the "Stick?"

In this presentation, the Indiana Department of Labor will cover information about the Indiana Occupational Safety and Health Administration (IOSHA) and the future of the agency. Attendees will gain an understanding of how the organization operates, as well as future areas of emphasis. The presentation will provide an overview of workplace safety and health in Indiana and how IOSHA views its role. Is it the carrot or the stick?

Timothy E. Maley, Deputy Commissioner of IOSHA, Indiana Dept. of Labor

Construction Safety

CS2: The Real Dangers Threatening Workers Who Enter Permit Required Confined Spaces (All; Less than 100 employees)

This presentation will give participants key information to enhance confined space written programs, identifying control measures, gaps in training programs and use of specialized equipment. Confined-space entry is one of the most common and one of the most serious hazards faced by workers. A universal definition of a confined space is elusive. In general, however, a confined space is an area with limited means of entry and egress that was not designed for continuous human habitation and that does not have adequate ventilation. Hazards occur when the confined space is associated with a deficiency of oxygen, the presence of a toxic chemical or an engulfing material, such as water. Decreased oxygen levels can be the result of a variety of conditions, including the replacement of oxygen with another gas, such as methane or hydrogen sulphide, or the consumption of oxygen by the decay of organic material contained in the waste water.

Gary Yurt, President/Chief Safety Advisor, ISTS, Inc.

1:45 p.m. – 2:15 p.m. – Safety Expo Refreshment Break in Expo Hall

Sponsored by  examinetics

2:15 p.m. – Concurrent Session Three

Effective Safety Management

SM3: Product Safety: Risk Management Fundamentals for the Safety Professional (N/I; All)

From the food we eat to the products we use, product safety is taken for granted. Recalls and unsafe products regularly capture news headlines and impact safety on and off the job. A fundamental understanding of key considerations is beneficial to expand your knowledge in this important safety topic area.

Michael Ruddy, CSP, Senior Risk Specialist, Chubb Group of Insurance Cos.

Updates in Education and Consulting Skills

EC3: Predicting and Preventing: Using Predictive Analytics to Eliminate Injuries (Intermediate; 101+)

Many companies search for true leading indicators by using inspections. They often fail, however, to use this observation intelligence. This talk will review our latest Safety Predictive Analytic research via a case study on over 120 million observations. This presentation will provide ongoing research on the four safety truths and other leading indicators to help predict, prevent and eliminate your next incident.

Chuck Pettinger, Ph.D., Process Change Leader, Predictive Solutions

Management Safety Principles and Solutions

MS3: Influencing Behaviors for Better Safety Performance (Intermediate; 500+ employees)

This training provides an understanding of the activators that influence employee behaviors, as well as an understanding of the types of consequences leaders can use that will most strongly influence those behaviors. We will look at why fear of injury or discipline won't lead to the types of behaviors we want, and how to communicate the consequences that will lead to safe behaviors. We will also examine how "normalization of deviation" affects the perception of consequences and can undermine even the best safety programs.

Keith Robinson, CSP, CHMM, Director - Health, Safety & Environment, Stantec Consulting Services, Inc.

Worker's Comp: Injuries, Analysis and Prevention

WC3: Introduction to Industrial Hygiene for the Safety Professional (Intermediate; All)

Industrial hygiene monitoring allows safety professionals to scientifically quantify worker exposures in the workplace, and base each hazard control upon this actual exposure data. An effective industrial hygiene monitoring program will serve to identify, quantify and prioritize workplace hazards. Several basic steps are required in order to start



this process. Industrial hygiene monitoring should be performed in order to quantify the exposures present in the workplace. Each hazard is generally monitored in accordance with established methodology.

Jeffery Dennis, MS, CSP, CHMM, CET, CSSM, WSO-CSE, President, Industrial Safety Solutions, Inc.

Occupational Health and Wellness

OH3: Effective Wellness Programs: Critical to Safety (Novice; All)

This will be an interactive workshop that will outline why EVERY safety program must contain effective wellness initiatives along with injury prevention and early reporting. National Centers for Disease Control data will be reviewed. This data will show a clear correlation between the lack of health and wellness and the risk for work-related injuries. This interactive workshop will also provide sample wellness, stretching and ergonomic recommendations.

Julie Nelson, Business Development Manager, ATI Worksite Solutions

INSAFE/Safety Fundamentals

SF3: Temporary Workers: Who Is Responsible for the Safety And Health of Temporary Employees?

Do you have temporary, loaned, leased or volunteer workers? Who is responsible to keep the injury logs, provide the PPE, perform medical surveillance and train the workers on HAZCOM? When does the multiemployer doctrine apply? This discussion will be of specific areas of responsibilities and how federal OSHA has stated through various letters of interpretations how it and Indiana OSHA will interpret and apply regulations.

Julie Alexander, Division Director of Industrial Compliance, Indiana Dept. of Labor

Construction Safety

CS3: ANSI Z359 Standards: A Fall Protection Guidebook (Novice; 250-499 employees)

At 40-plus years old, the OSHA 1910 general industry regulations are largely obsolete on fall protection best practices. The recent and forthcoming changes to the ANSI Z359 fall protection standards, which provide guidance on fall protection equipment and programs, can have a major impact on developing and implementing an effective fall protection program. The ANSI Z359 standards cover all aspects of a program, including management, training, hazard identification, hazard control and program evaluation. After this session, participants will be better able to assist their organizations in maintaining a fall protection program that achieves compliance and reduces risk.

Kevin Wilcox, PE, CSP, Principal, LJB Inc.

3:30 p.m. – Safety Expo Refreshment Break in Expo Hall

Sponsored by



3:45 p.m. – Concurrent Session Four

Effective Safety Management

SM4: SAFER by Choice (All; All)

We all have and make choices – some good some not so good. Come learn why we may make these choices, as well as what we can do to make the right and smart choices, especially in the workplace.

Skipper Kendrick, CSP, President, Kendrick Global Enterprises, LLC

Updates in Education and Consulting Skills

EC4: Technology-Caused Distraction: Safety Issues and Solutions (All; All)

Changing technology can have many results, both good and bad. One area that is getting increasing attention is the effect technology has on human distraction. This presentation will directly address the issues and will present an up-to-date summary of the research on distraction,

including pedestrians, use of radios, cell phone usage and more. After establishing what we know and don't know based upon research, I will discuss the legal issues involving employee distraction, on and off the job. We will conclude with recommendations on what should be considered by safety professionals in reducing distraction-caused issues.
David Fender, EdD, CSP, CSHM, Professor, Murray State University

Management Safety Principles and Solutions

MS4: Integrating EHS Into Lean, Six Sigma and 5S Programs (Intermediate; 101+)

Integrating environmental, health and safety practices into Lean/Six Sigma/5S events is crucial to ensure that EHS risks are identified and addressed before an incident occurs.

Mark Flick, Vice President of Compliance Services, Keramida

Worker's Comp: Injuries, Analysis and Prevention

WC4: Understanding and Lowering the Risk of Hand-Arm Vibration Syndrome (All; All)

The objectives of the presentation are to describe the nature of power tool-induced hand-arm vibration disease; the sources (rotary sinusoidal and percussive impact tools) of vibration exposure and the mechanisms of injury; approaches that lower risk of injury; identifying worker and employer responsibilities; and directing participants to information resources for further education.

Danny Riley, Ph.D., Professor Cell Biology, Neurobiology & Anatomy and Physical Medicine & Rehabilitation, Medical College of Wisconsin

Occupational Health and Wellness

OH4: Protecting Your People and Resources by Integrating Employee Wellness and Workplace Safety (Intermediate; 0-499)

Your employees' lives are complex. Adding an injury or health concern to that complexity has a significant impact on costs, their work performance and efficiency of your organization. While employee wellness, risk control, disability management and worker's compensation are often treated as separate concerns addressed through non-integrated initiatives,

the reality is they are all interrelated. A more efficient and cost-effective approach is to create safe, productive worksite environments and develop strategies in an integrated and proactive manner that address the full spectrum of health needs. Providing tailored resources to the employees will help further contain costs and maximize productivity.
Katie Fucik, MPH, Health Strategist, Hylant Group, and Bill Musick, Director of Loss Control Services, Hylant Group

INSAFE/Safety Fundamentals

SF4: Developing a Site-Specific Safety and Health Program

Corporate safety and health program and site-specific – what's the difference?? The key difference between the two is that the site-specific plan is comprehensive and encompasses all possible hazards that a company might encounter on any jobsite. A site specific plan focuses on the hazards of the individual worksite. Participate in this session to learn more about the requirement to develop, implement and maintain a site-specific safety and health program.

John Brunswick, INSafe Safety Consultant, Indiana Dept. of Labor, and Bryan Thais, INSafe Safety Consultant, Indiana Dept. of Labor

Construction Safety

CS4: Regulatory and Equipment Changes and Innovations in Fall Protection

Changes to the regulatory standards in fall protection are on the horizon and with the new standards, new products and innovations will be developed to protect workers when at heights. This session will provide an overview of the latest changes in the rules governing fall protection. Samples of new fall protection equipment will also be discussed, providing an inside look at their development.

Kenneth Lemke, Director of Engineering, Sellstrom Manufacturing Company, and Brad May, Regional Sales Manager, Sellstrom Manufacturing Company

5:00 p.m. – 6:00 p.m. – Gala Reception (all attendees, speakers and sponsors/exhibitors are invited to attend)

THURSDAY, FEBRUARY 20, 2014

7:00 a.m. – 4:00 p.m. – Registration Desk Hours

Sponsored by



7:00 a.m. – Continental Breakfast

Sponsored by



8:00 a.m. – Opening General Session

Opening General Session

OGS: Effectively Handling An Enforcement-Driven OSHA While Achieving Operational Excellence and Profitability Through Safety

This presentation will review the essential elements of OSHA compliance and an effective workplace safety and health program, as well as the use of safety issues by unions and a growing group of whistleblowers. The presentation will also explain how, when used properly, safety compliance can be a "profit center" and not another administrative cost.
Edwin G. Foulke, Jr., Partner, Fisher & Phillips LLP

9:00 a.m. – Break

9:15 a.m. – Concurrent Session Five

Effective Safety Management

SM5: Safety of the Faceless Employee (All; All)

Throughout the United States, more and more companies are using temporary employees to meet their customer needs. Many companies, however, do not see the importance of protecting these important business assets and thus do not put the same effort into them as they do their own employees. This session will review the importance of protecting temporary employees and how to establish a system to ensure their safety.
Eric Harper, CSP, Manager - Process Safety, EHS Technology Group LLC

Environmental/Emergency/Fire Protection

EP5: Prevention and Defense Against Workplace Violence

This session will cover accident investigation techniques and issues related to the time period immediately after an incident/event has taken place. We will also briefly touch on response activity, PR, witness interview and legal consideration.

Amir Mousavi, Ph.D. (ABD), MPA, MS, CEM, CFO, FF/NREMT-P, safety director, City of Jeffersonville

Safety Objectives and Concepts

SC5: The Buried Truth Uncovered (All; All)

I was a laborer installing water lines when the trench I was in collapsed on me. It took 10 minutes for the rescue workers to get to me, and when they did, I was not breathing. It is a miracle that I am alive today. In my presentation, I describe the events leading up to my devastating accident, how it could have been prevented by following proper safety procedures and the impact the accident has had on me and my family for the past nine years. I am able to relate to the common working man, and I tell the audience my story from my heart. I am an average guy who had the typical attitude toward safety: accidents happen, but not to me. Until the one that nearly took my life. My message is simple and serious, "This can happen to you."

Eric Giguere, Motivational Safety Speaker, Safety Awareness Solutions

Safety, Health and Environmental Best Practices

BP5: Machine Guarding (N/I; All)

One or more methods of machine guarding must be provided to protect the operator and other employees in the machine area from hazards such as those created by point of operation, ingoing nip points, rotating parts, flying chips and sparks. Moving machine parts have the potential for causing severe workplace injuries, such as crushed fingers or hands, amputations, burns and blindness, just to name a few. Safeguards are essential for protecting workers from these needless and preventable injuries. Machine guarding and related machinery violations continuously rank among the top 10 of OSHA citations issued. Mechanical power presses have also become an area of increasing concern.

Gary Clark, RSP, Loss Prevention Consultant, Gibson

Risk Identification and Control

RC5: Adapting Your Safety Program for the Aging Workforce (All; All)

Today's employers are increasingly finding that their average workforce age is escalating. While this means the worker may have more experience at performing the job, it does not necessarily mean that risk of injury is lower. In fact, the aging population presents unique challenges for remaining safe in the workforce. Consideration needs to be given for a variety of issues such as limited near vision, poor balance and reduced stamina. This session will present some creative training methods specific to the aging population. And, attendees will learn how to audit their workplace for existing risks that are unique to this population

Sheila Denman, MA, MS, PT, Senior Vice President, ATI Worksite Solutions

INSAFE/Safety Fundamentals

SF5: Contractor Safety

Do you contract work out? Attend this session to learn about the requirements to manage safety issues related to contractors and their employees working in an industrial facility. Key topics discussed include planning, hazard assessment, safety training, accountability, communication, audits and overall compliance.

Ebony Poindexter, INSafe Safety Consultant, Indiana Dept. of Labor, and Debbie Raven, INSafe Safety Consultant, Indiana Dept. of Labor

Construction Safety

CS5: Confined Space Standards for Construction

What does this "New" Confined Space Entry Standard mean for the construction industry? Are you prepared? And, how will you comply? Presentation materials will focus on confined space determinations and emergency rescue services.

Gery Giannini, Please provide job title, Heritage Group Safety

10:30 a.m. – Break

10:45 a.m. – Concurrent Session Six

Effective Safety Management

SM6: Catastrophic Workplace Accidents (All; All)

While OSHA continues to refer cases to the Justice Department for criminal prosecution, more often it is an aggressive state district attorney or state attorney general who is bringing even more criminal prosecutions. At the same time, plaintiffs' attorneys are bringing civil tort actions against companies and their safety managers for violations of safety regulations and, in many cases, using the OSHA inspection file to prove their case. Also, the EPA is securing evidence from the OSHA inspection to bring criminal environmental lawsuits. This session will examine: how to understand your legal rights during OSHA inspections; how to understand the scope of criminal and civil liability for safety and health violations; how to secure legal privilege to accident investigations; how to protect your company and its officials from potential liability; and how to ensure the company's safety policies are in place to protect against potential liability.

Edwin G. Foulke, Jr., Partner, Fisher & Phillips LLP

Environmental/Emergency/Fire Protection

EP6: EMERGENCY! High-Tech Facility Design and Operation for Effective Emergency Response (All; All)

Modern high-technology laboratory and manufacturing facilities often utilize a number of hazardous materials in their operation. These materials, as well as the design of the facility itself, can provide significant challenges for emergency responders. These challenges can – and should – be addressed by facility-design parameters as well as by operating policies. This session outlines simple, straightforward steps that can be taken to make response to various types of emergencies safer and more efficient. Some of these involve simple design solutions applicable during facility design or as retrofits to existing facilities. Others involve the establishment of operational and emergency-response policies. Together, these solutions assist both internal and external emergency responders and provide higher levels of safety for facility occupants during an emergency.

John Weaver, Facility Manager, Birck Nanotechnology Center, Purdue University

Safety Objectives and Concepts

SC6: Control Banding Approach to Grouping Chemical Risk (I/A; All)

Control Banding (CB) is a framework used to manage occupational risk to chemicals. CB has been used intensively in the pharmaceutical and biological industries and is becoming more broadly applied in areas such as exposure to bioaerosols, engineered nanoparticles and fracing agents. The primary principle of CB is the categorical grouping of similar chemical hazards based on similar toxicological characteristics (qualitative and quantitative) for managing risk. CB was developed in response to a changing environment, including an increasing number of chemicals handled in the global workplace and diminishing resources available to provide adequate toxicity and exposure data. The CB process leads to the selection of a hazard band for a chemical and a range of acceptable exposure limits for that band. Selection of controls and PPE then follow, using the band as a basis for potential severity and an exposure assessment for potential exposure.

Andrew Havics, CIH, PE, Director, pH2, LLC

Safety, Health and Environmental Best Practices

BP6: Safe 4 the Right Reasons (Novice; All)

Dale Lesinski has trained thousands of employees in every line of work. He is an accomplished trainer and public speaker who has earned the reputation of a master communicator in large part due to his common sense approach. Dale's use of humor, audience participation, real



world situations and laid back presentation style motivates employees to value their own personal safety and watch out for others. This message is designed to become the foundation of your safety culture. It is easily incorporated into a safety campaign so you can market your safety message in a positive manner, and it also allows employees to eliminate at-risk situations through an observation process. It also serves as a perfect complement to behavior based safety programs. Safe 4 the Right Reasons delivers plenty of “ah-ha” moments and “ha-ha” Moments, and if you are “laughing and smiling – you are listening and learning!” Dale Lesinski, QSSP, Vice President of Sales & Training, DiVal Safety Equipment, Inc.

Risk Identification and Control

RC6: Worksite Analysis Techniques and Tools (All; All)

Determining hazards and understanding risk are an integral part of a strong safety and health program. This workshop will introduce you to various methods used to assess risk, measure risk and change risk. We will compare simpler, more conventional methods including PPE assessments and job hazard analysis to more complex techniques using a risk matrix. Such methods are used for hazard identification, hazard reduction and ultimately for hazard correction and priority setting. Bobbi K. Samples, Owner/Principal Consultant, The Safety Firm, LLC

INSAFE/Safety Fundamentals

SF6: The Road to VPP Star

The Indiana Voluntary Protection Program is one of the Indiana Department of Labor’s cooperative programs that encourage private and public sector efforts to improve occupational safety and health. Through VPP, the Indiana Department of Labor recognizes workplaces that have developed, implemented and maintained excellent safety and health management systems. The programs place significant reliance on the cooperation and trust inherent in partnership and complement the agency’s regulatory and enforcement efforts. Attend this session to get started on the path to VPP Star demonstration. Mike Gaskill, Indiana VPP Manager, Indiana Dept. of Labor, and Beth Gonzalez, Indiana VPP Team Lead, Indiana Dept. of Labor

Construction Safety

CS6: OSHA’s Crystalline Silica Notice of Proposed Rule Making and Its Possible Effect on the Construction Industry

Robert Baldwin, Director of Safety Services, Indiana Construction Association

12:00 p.m. – Governor’s Workplace Safety Awards Lunch

1:45 p.m. – Concurrent Session Seven

Effective Safety Management

SM7: Managing a Diverse Workforce: What’s Your CQ? (All; All)

Business today is a multicultural challenge. Effective client and employee management requires the ability to adapt to cultural differences quickly and effectively. At this session, human resource professionals will learn how to equip themselves to become culturally intelligent leaders, understand diverse customers, manage diverse teams, adapt leadership styles and demonstrate respect across cultures.

Martin George, CEO, Language Training Center

Environmental/Emergency/Fire Protection

EP7: Use Conflict Creatively: Increase Safety (All; All)

Conflict is the spark that ignites the fire of invention and creativity. The flames of conflict, however, can also destroy trust and vitality that are essential for any successful business enterprise. Safety is often compromised as a result of poorly handled conflict. In this interactive session, Karen Valencic will blend concepts from martial arts and science to demonstrate how to shift destructive conflict to innovative conflict. Attendees will leave with a fresh perspective about conflict and skills to practice everyday. The teaching style includes visual demonstrations, interactive exercises, light physical movement and lecture. All learning styles are addressed in the program, making it ideal for all types of learners. Enhanced leadership skills and the ability to cope with change are natural by-products of this program.

Karen Valencic, President, Spiral Impact

Safety Objectives and Concepts

SC7: But We Aren’t a Trucking Company! The Impact of Federal Motor Carrier Safety Regulations on Non-traditional Transportation Operations (Novice; All)

This session focuses on the impact and applicability of the FMCSRs on companies that do not operate solely to transport products but do operate commercial motor vehicles in commerce.

Delinda Davis, Senior Safety Consultant, National Transportation Consultants Inc.

Safety, Health and Environmental Best Practices

BP7: You Are Not In This Alone (Advanced; All)

Draw upon all the resources, internal and external, available. Loss control can not effectively implement nor sustain a safety program alone. It takes management and operations to drive the program.

Bruce Thompson, VP Sr. Loss Control Consultant, Lockton Companies

Risk Identification and Control

RC7: Predict the Shortcut Before it Results in an Employee Injury (Intermediate; All)

A leading cause of workplace injuries involves unsafe acts due to employees taking shortcuts. The presentation will focus on how one company developed a shortcut analysis program, which examined management policies, the work environment, personnel, injury trends and training programs to determine if they could predict where the shortcut would take place. It then used this knowledge to change management programs, workplace exposures and training programs to eliminate the shortcut before it resulted in an injury. The presentation will highlight the best practices used by this company in the development of the shortcut analysis program and how it identified and controlled hazards associated with injury trends and exposures that could have resulted in serious injury. In addition, the presentation will discuss how the shortcut prevention philosophy was shared with all employees to help them work safer, both in the workplace and at home.

Brendan Moriarty, CIH, CSP, MSPH, CPCU, Senior Territory Casualty Specialist - AVP, Chubb & Son

INSAFE/Safety Fundamentals

SF7: Fleet Safety

Transportation-related incidents are the leading cause of Hoosier workplace fatality. In 2012 in Indiana, nearly 50% of workplace deaths were attributed to these incidents. Whether you have one driver or a fleet of 50 trucks, this is a must-attend session. Attendees will learn about best practices for transportation safety, as well as gain information about resources, materials and tools available for employers to help keep workers safe.

Mark McDaniel, INSafe Safety Consultant, Indiana Dept. of Labor and Bob Starkey, INSafe Safety Consultant, Indiana Dept. of Labor

Construction Safety

CS7: Smart Business for Crane Operator and Rigger Work

Accredited, third-party certification of crane operators and riggers makes good business and safety sense because fewer accidents occur when workers are certified. This presentation will highlight the current status of OSHA's proposed delay of crane operator certification requirements in 1926.1400. It will discuss the implications for employers if the November 2014 deadline comes to pass before OSHA determines an action plan regarding its proposed delay. Contractors will learn about contractual trends requiring crane operator and/or rigger certification in order to do business with certain customers. Employers will understand the safety benefits of operator and rigger certification.

Debbi Dickinson, Please provide job title, Please provide company name

2:45 p.m. – Refreshment Break

3:00 p.m. – Concurrent Session Eight

Effective Safety Management

SM8: Active Shooter Situations

Larry Holloway, President, LGH Safety Services, LLC

Environmental/Emergency/Fire Protection

EP8: Workplace Hazards of the Green Industry (Intermediate; All)

Overview and case studies of green industry hazards and controls. *Joseph Zaroni, PhD, MILR, Director of Continuing Education, Illinois Occupational and Environmental Health and Safety Education and Research Center, University of Illinois at Chicago, and Sheryl Ulin PhD, CPE, Director of Continuing Education, The University of Michigan Center for Ergonomics*

Safety Objectives and Concepts

SC8: Safety Beyond PPE (Novice; 500+ employees)

At 8:00 a.m. Kina Repp began her first day of work in a fish processing plant. Forty minutes later her left arm was being torn from her body as she was caught in a moving conveyor belt. This horrifying accident and her fight to survive changed her life forever. Through poignancy and humor, Kina's message impacts, resonates and inspires people to consider safety as a personal and corporate responsibility.

Kina Repp, Speaker, Safety Done Right

Safety, Health and Environmental Best Practices

BP8: Reducing the Fear of Reporting EHS Incidents and Injuries (or Eliminating Fear in the Workplace) (Intermediate; All)

The emphasis in many companies is to achieve zero incidents and a good record. A numbers system for reporting "how we are doing" causes reactions to positive or negative results. Employees at all levels are often reluctant to report incidents and cover-up can occur. Most employees at all levels lack the skills to handle incidents that do occur in a constructive, learning type of intervention. We will explore what is necessary to create a "fearless" environment, where people feel safe to openly admit to, report and discuss incidents for maximum learning and prevention. The skills that are needed to create a productive, learning environment will be covered.

Michael Topf, MA, President and CEO, Topf Initiatives

Risk Identification and Control

RC8: Loss Control That Works (Intermediate; 500+ employees)

Learn how to structure your safety programs so they actually reduce incidents instead of just complying with OSHA standards. A 14-year safety professional and two time "Safety Director of the Year" (awarded by the Distribution Contractors Association) will review pitfalls with the common approach to safety and explain ways you can implement programs that drive results.

Kevin Beswick, Senior Safety Specialist, RMS-Safety

INSAFE/Safety Fundamentals

SF8: Industrial Hygiene Sampling Strategy

Industrial hygiene is the science of anticipating, recognizing, evaluating and controlling workplace conditions that may potentially injure or sicken a worker. Industrial hygienists use environmental monitoring and analytical methods to detect the extent of worker exposure and employ engineering, work practice controls and other methods to control potential health hazards. Attend this session to gain knowledge of best practices for the development of an industrial hygiene plan for your facility.

Gary Hulbert, CSP, CHMM, INSafe Safety Consultant, Indiana Dept. of Labor, and Tony Kuritz, INSafe Safety Consultant, Indiana Dept. of Labor

Construction Safety

CS8: What is MICCS? Benefits, Advantages and Evaluation Process of the MICCS Certification Program

The MICCS Certification Program is utilized by many facility owners in Central Indiana to evaluate contractors before they perform work on a jobsite, but it is more than a safety pre-qualification tool. It is a way for contractors to have a professional evaluation of their safety program to ensure that they are meeting or exceeding industry standards. Learn how the program can benefit your company, whether you are a facility owner or a contractor.

Marcy Watson, Association Manager, MICCS

4:00 p.m. – Conference Adjourns

Schedule is subject to change. For most recent schedule, please visit www.INsafetyConf.com.

Registration Information

✉ **Mail:** Indiana Chamber of Commerce
PO Box 44926
Indianapolis, IN 46244

☎ **Fax:** (317) 264-6855

☎ **Phone:** (317) 264-6885 or (800) 824-6885

🌐 **Web:** www.INsafetyConf.com

✉ **E-mail:** seminars@indianachamber.com

Cancellations/Substitutions:

All cancellations must be received in writing. A \$25 processing fee will be charged for all cancellations. Cancellations received less than two weeks prior to the conference will be issued a credit certificate, less a \$25 processing fee. Credits can be used toward any future Indiana Chamber conferences for up to one year. Credit is fully transferable. Substitutions are welcome at anytime, but requested in advance of the conference.

Inclement weather policy is available at www.INsafetyConf.com

Conference and Hotel Information

Hyatt Regency Indianapolis
One South Capitol Ave., Indianapolis, IN 46204
Phone: (888) 421-1442 (Please request the "2014 Indiana Safety & Health Conference" room block to receive the conference rate)
Web: www.hyatt.com, group code: SAFE

Cutoff date for hotel rooms is January 27, 2014.

The advertised "Safety Conference" room rate cannot be guaranteed after the cutoff date.

1. To register, please complete the following

(please copy for additional attendees.)

Name: _____
Designation: _____
Title: _____
E-mail: _____
Company: _____
Address: _____
City, State ZIP: _____
Telephone: _____
Fax: _____
Dietary Restrictions: _____

2. Payment Information

- Bill me
 Check enclosed (payable to Indiana Chamber of Commerce)
 VISA MasterCard American Express

Card #: _____
Exp. Date: _____
Name on Card: _____
Signature: _____

3. Registration Options *(please copy form for additional attendees)*

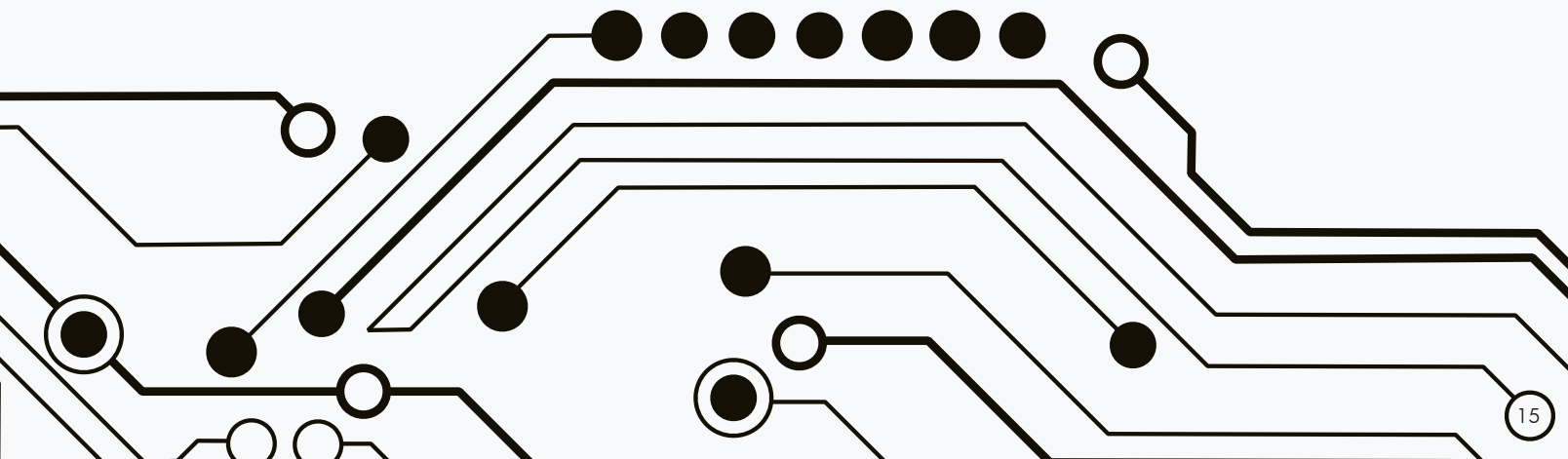
- 3-Day Conference & Expo (February 18-20) – \$448
 2-Day Conference & Expo (February 19-20) – \$349
 Pre-Workshops Only (February 18) – \$99
 February 19 Conference & Expo Only – \$249
 February 20 Conference Only – \$249
 Expo Only (February 19) – \$49
 Student Conference (February 18-20) – \$89
 Governor's Workplace Safety Awards Luncheon only (February 20) – \$39; table of 10 – \$379

Group Discounts Available! Use code: SAFETY14

Send 4, get 20% off!
Send 5-9, get 25% off!
Send 10 or more, get 30% off!

- Group discount only applicable on full conference registrations, 2-day conference registrations, second-day only registrations and/or third-day only registrations.
- Registrations must be made together to receive group discount.
- Registrations must be for paid attendees to be eligible for group discount.

www.INsafetyConf.com





PRSR STD
 U.S. POSTAGE
PAID
 Indianapolis, IN
 Permit No. 159

115 West Washington, Suite 850S
 Indianapolis, IN 46204
www.INsafetyConf.com

**2014 INDIANA
 SAFETY AND HEALTH
 CONFERENCE & EXPO**
 INFORMATION ENCLOSED
 REGISTER TODAY!

www.INsafetyConf.com



FEBRUARY 18-20, 2014

**2014 INDIANA SAFETY AND
 HEALTH CONFERENCE & EXPO**